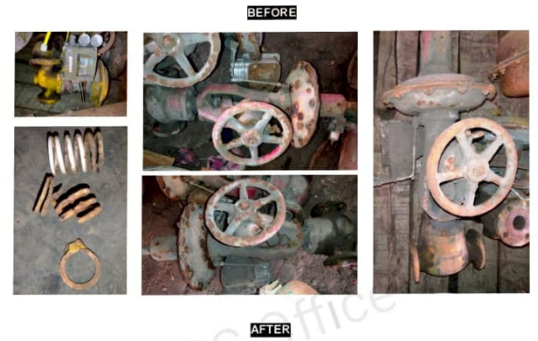
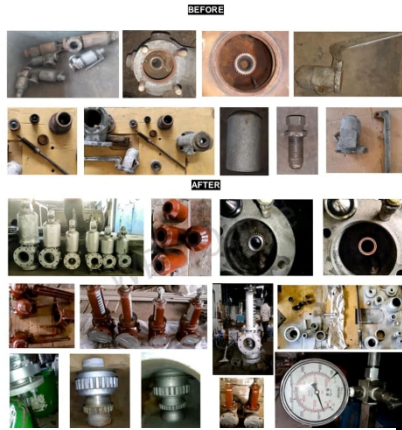


CUSTOMER NO.1 HINDALCO INDUSTRIES LTD.



Recieved  
condition

Final  
condition



BEFORE



AFTER



BEFORE



AFTER

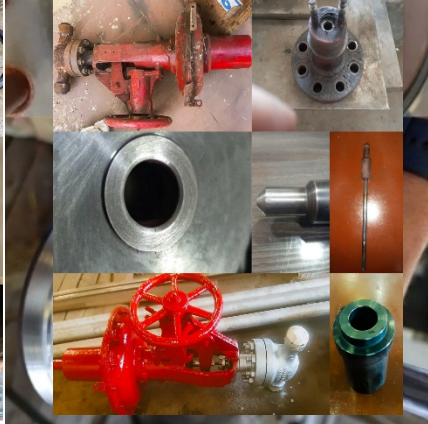






**CUST.NO.3 NANDAN DENIM LTD, AHMEDABAD.**









CUST.NO.4 PHILLIPS CARBON BLACK LTD, PALEJ



- 1. 1.5" 300#
  - 2. 1" 300#
  - 3. 1" 300#
- GLOBE CONTROL VALVE

OVERHAULING OF THE VALVES  
 SOFT PARTS REPLACEMENT OF THE VALVES  
 SEAT MACHINING AND LAPPING.  
 PLUG MACHINING AND POLISHING.  
 COATING AND  
 AS PER STANDARD PNEUMATIC AND HYDRO TESTING.  
 PAINTING OF THE VALVES.





**CUST.NO.5 ATUL**



valve overhauling,  
refurbishment,  
testing.

**BEFORE**



**BEFORE**



**AFTER**

**AFTER**



positioner replacement  
and calibration

BEFORE



BEFORE



AFTER



AFTER



BEFORE



AFTER







**CUST.NO.7 GRASIM CHEMICAL, VILAYAT, BHARU**



**BEFORE**



**AFTER**

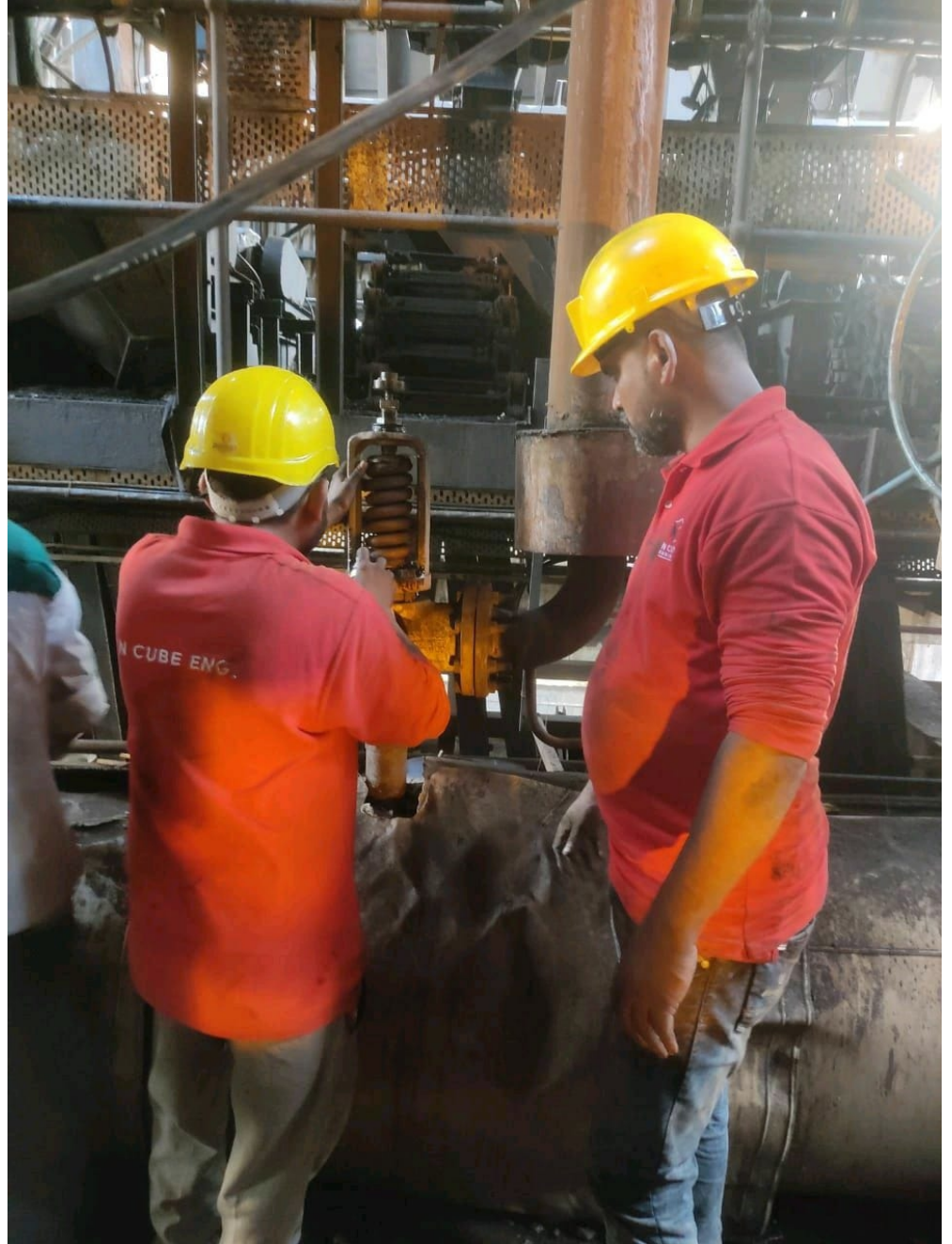












**CUST. NO.9 VRAJ TEXTILE, AHMEDABAD.**



CUST.NO. 10 SHREE RAMA NEWS PAPER AND BOARD, SURAT.



**BEFORE**



**AFTER**







**Before**



**Before**



**After**



**After**